

STURDY WATER STORAGE TANKS

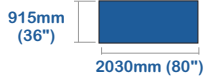
STURDY WRC approved water storage tanks range in size from 950lts to 10,000lts and are ideal for storing potable water

STURDY COMPACT



Capacity*: 950lt. (208 Gal)
 Length: 1,650mm (65")
 Width: 675mm (27")
 Height: 1000mm (39")
 Lid Opening: 200mm (8")

RECOMMENDED SUPPORTING BASE:



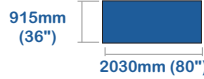
Product Code: 067 - A

STURDY R



Capacity*: 1,100lt. (242 Gal)
 Length: 1,650mm (65")
 Width: 675mm (27")
 Height: 1130mm (45")
 Lid Opening: 200mm (8")

RECOMMENDED SUPPORTING BASE:



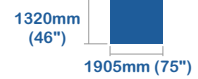
Product Code: 004 - A

STURDY 1000



Capacity*: 1,100lt. (242 Gal)
 Length: 1,725mm (68")
 Width: 1,050mm (42")
 Height: 1,000mm (39")
 Lid Opening: 200mm (8")

RECOMMENDED SUPPORTING BASE:



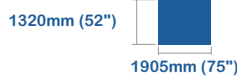
Product Code: 001 - A

STURDY 1300



Capacity*: 1,360lt. (299 Gal)
 Length: 1,725mm (68")
 Width: 1,150mm (45")
 Height: 1,100mm (43")
 Lid Opening: 300mm (12")

RECOMMENDED SUPPORTING BASE:



Product Code: 002 - A

STURDY JXL



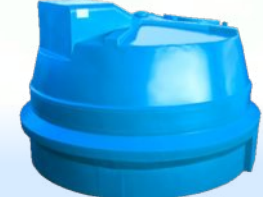
Capacity*: 2,500lt. (550 Gal)
 Length: 2,100mm (83")
 Width: 1,350mm (53")
 Height: 1,330mm (52")
 Lid Opening: 200mm (8")

RECOMMENDED SUPPORTING BASE:



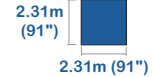
Product Code: 069 - A

STURDY 2000



Capacity*: 2,200lt. (484 Gal)
 Diameter: 1,930mm (76")
 Height: 1,290mm (51")
 Lid Opening: 500mm (20")

RECOMMENDED SUPPORTING BASE:



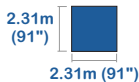
Product Code: 171 - A

STURDY 3000



Capacity*: 3,300lt. (725 Gal)
 Diameter: 1,930mm (76")
 Height: 1,670mm (65")
 Lid Opening: 500mm (20")

RECOMMENDED SUPPORTING BASE:



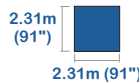
Product Code: 170 - A

STURDY 5000



Capacity*: 5,000lt. (1,100 Gal)
 Diameter: 1,930mm (76")
 Height: 2,380mm (94")
 Lid Opening: 500mm (20")

RECOMMENDED SUPPORTING BASE:



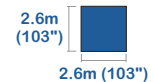
Product Code: 268 - A

STURDY 10 000



Capacity*: 10,100lt. (2,200 Gal)
 Diameter: 2,500mm (99")
 Height: 2,815mm (111")
 Lid Opening: 480mm (19")

RECOMMENDED SUPPORTING BASE:



Product Code: 366 - A

*Note: Whilst our tanks have been designed for strength and are very durable and robust, they must be completely supported on a flat concrete base as per the instructions embossed into each tank body. The support dimensions shown will accommodate both tank and bund.

*Note - All capacities +/- 10%

STURDY WATER STORAGE TANKS

Features & Benefits

All Sturdy Products tanks are WRC approved for the storage of potable water.

Our large capacity tanks are ideal for all types of industry, from car washes, golf courses, hotels, farms and also areas prone to low water pressure.

Sturdy tanks come in a variety of capacities and sizes to suit your requirements.

All tanks are manufactured from strong, durable, compounded UV stabilised medium density polyethylene which will never rust, fade or require painting.

All our tanks should be completely supported underneath. A concrete base or concrete lintels are ideal and should protrude at least 2 inches past the tank on all sides, as per the instruction moulded into each tank.

Optional drainage bung, taps and non return valves can be fitted upon request and fittings are available from 1" to 6".

By interconnecting pipework you can create a bank of storage tanks to fulfill your requirements.



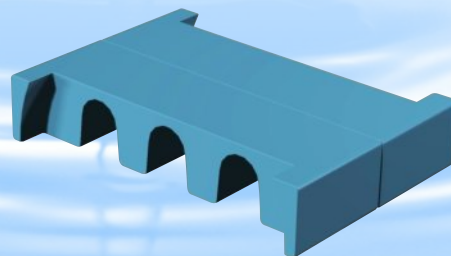
Tank Plinths Also Available

Strong and durable plinths offer ideal and secure support for your water tank, ensuring longer product life

Available in two options for cylindrical and horizontal tanks



Height: 700mm
Length: 1980mm
Width: 1870mm
Code: 167 - A



Height: 400mm
Length: 1980mm
Width: 1400mm
Code: 168 - A



STURDY PRODUCTS LIMITED
Blessington Industrial Estate, Blessington, Co Wicklow
Tel: +353 (0)45 865044 Fax: +353 (0)45 865721
E-mail: sales@sturdyproducts.com Website: www.sturdyproducts.com